

---

**Electric Car Charger Pile**  
**DC charging pile**  
**DCL030A/B Stand/Floor-type DC charging pile**

**CASSPOWER®**



**30KW Floor-type DC Charging Pile**

**Features:**

- Perfect safety protection function, with input side over-pressure, under-pressure protection, output side over-pressure, overflow protection, insulation monitoring protection, over-temperature, short circuit, leakage, lightning protection, battery anti-coupling protection and other protection.
- It has three kinds of state indications: power supply, charging, and failure. It is fully compatible with the new version of the national standard, has emergency shutdown, connection confirmation test, charging door test, and filling.
- Charging operation in various ways, according to the "automatic full", "time mode", the amount of "electricity mode", combined with the needs of BMS to charge electric vehicles
- It supports cable(RS-232 / 435/CAN, Ethernet) and wireless(Bluetooth, GPRS, 3G, 4G, etc.) communication methods, and can be centralized management of charging pile groups. The system software has local and remote upgrade functions.

**Applicable premises**

Portable DC charging piles are suitable for new energy vehicle 4S stores, Depot commissioning areas, new energy vehicle road rescue and other situations that require frequent changes of charging sites or temporary recharging.

## Product parameters

Specifications	Model	DCL030A/B		
Charging equipment	User interface	4.3 inch LCD color touch screen		
	Rated Power	30KW		
	Installation Method	Stand/Floor-type		
	Line way	Down in, Down out.		
	Input Voltage	AC380V±20%		
	Size	-		
	Input Frequency	45~65Hz		
	Output Voltage	200V-500V	200V-750V	200V-750V
	Output current range	0-60A	0-40A	0-75A
	Cable Length	4/5m		
	Measurement precision	0.5level		
Ripple	Limit current protection value	≥110%		
	Pressure accuracy	≤±0.5%		
	Stabilizing precision	≤±1%		
	Ripple	≤±0.5%		
	Efficiency	≥94.5%		
	Power factor	≥0.99 (50% load )		
	Harmonic content THD	≤5% (50%load )		
Functional design	Interface	4.3 inch LCD color touch screen		
	Charging mode	Automatic full / fixed charge / fixed amount / fixed time		
	Pay method	APP Payment / Credit Card Payment / Scan Code Payment		
	Communication interface	Ethernet 2/3/4G		
Safety Design	Safety	GB/T 20234, GB/T 18487, GB/T 27930, NB/T 33008		
	Protection	Over-voltage protection, under-voltage protection, overload protection, short circuit protection, ground protection, over-temperature protection, low temperature protection, lightning protection, emergency stop protection, leakage protection, Polar reverse protection.		
Environment	Working TEMP.	-25℃~+50℃		
	Working Humidity	5%~95%(RH)		
	Altitude	<3000m		
	Protection Level	IP54		
	Cooling Method	Air cooling system		
	Noise control	≤60dB		
	MTBF	100,000Hours		

## Operation and Management Cloud Platform

Using cloud computing, Internet of Things, car networking, big data and other related technologies, integrated smart parking lot management, electric buses, logistics vehicles, time-share leasing,

---

network car and other vehicle operation management, Implement the intelligent scheduling of vehicles and parking spaces and charging piles to meet the operational requirements of billing and settlement management data acquisition and supervision security active warning mechanism energy dispatching and management requirements management management charging network interconnection operation PPP model Public and private cloud construction, joint operation, cloud transformation, etc..

## **Operation and Management Platform of Recharging Power Station**

It provides a complete solution for the industry's leading charging network operation management, which can seamlessly connect with the parking lot management system, and interface with the operation vehicle management platform business such as electric buses, logistics vehicles, and time-sharing leases to realize the three-person operation management model of vehicles, piles, and positions., And it can interconnect with the operation and management platform of third-party charging network, realize cross-geographical and cross-network consistent charging for charging service operators, and provide a variety of service modes, including public cloud leasing, private cloud construction, joint operation, and cloud transformation.

## **Cloud Service Platform**

The data cloud server of the energy management system provides cloud services for various terminal service applications and provides data query and monitoring services. Such as WEB data release, APP services, etc..

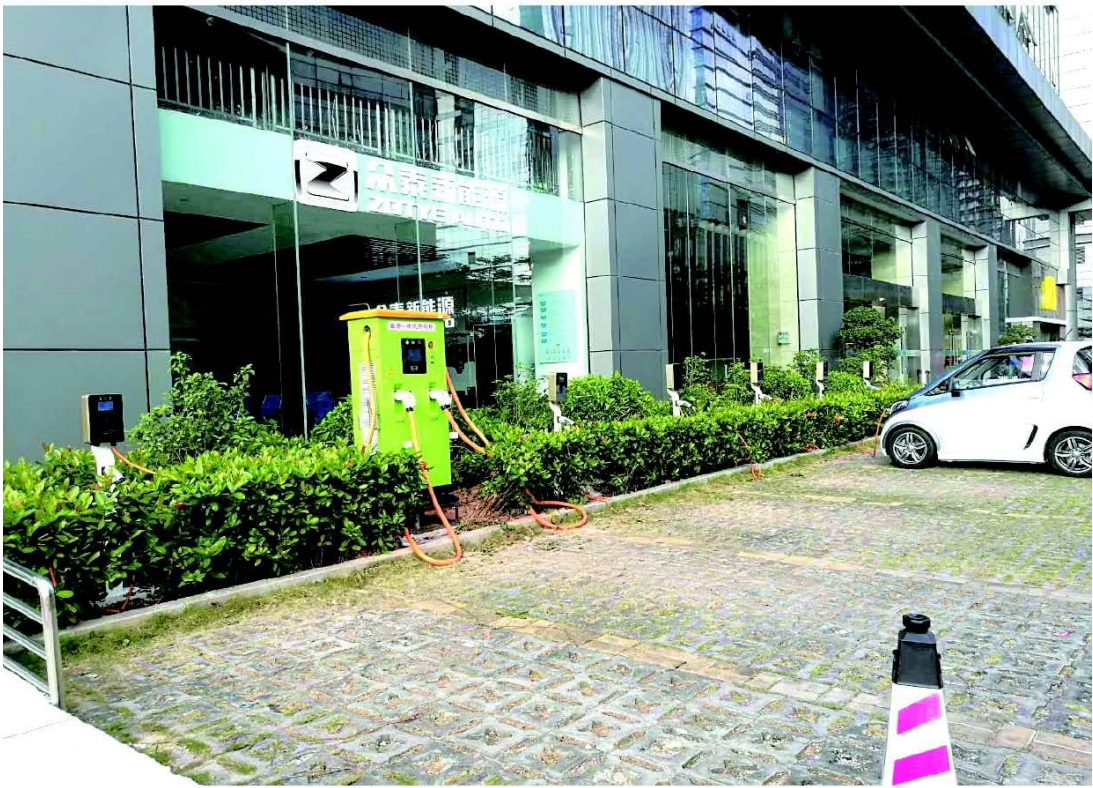
## **Station level surveillance management system**

The monitoring system has two operating workstations and data servers that are mutually alternate. It is a human interface for operators to implement process monitoring and control interactions. It provides operator authorization, chart generation, and call functions. Complete the various control command operation and the system failure emergency processing function. Including the management of the computer monitoring system of the entire charging station, the management of the database, the functions of online and offline calculations, the generation of various charts, curves, voice alarms, and GPS timing, etc.. The operator station is also used by the operating staff. It has graphics display, monitoring and control functions for the entire station, operation control command, summoning or timing printing, setting and changing working methods, and other functions. All the operation controls of the entire station can be implemented through the mouse and keyboard; Through the color display can monitor the whole station's production and equipment operation in real time, and obtain all kinds of information required.

## Application Scenes and Cases







## Sales Network in China



### Packaging and Transport :

Standard export carton. Each piece is packed by vacuum plastic bag into a inner box then 5pcs to a carton.

Delivery Detail: 5-15working days against payment.



---

## **Our Services**

1. Any inquiries will be replied within 24 hours.
2. Professional manufacturer, welcome to visit our website.
3. OEM/ODM available:
  - a) Print logo on our products;
  - b) Customized specification;
  - c) Customized color package box;
  - d) Any your idea on our products, we can help you to design and put it into production.
4. High quality, fashion design, reasonable&competitive price, fast lead time.
5. After-sale service:
  - a) All products will have been strictly quality checked in test house before packing;
  - b) All products will be well packed before shipping;
  - c) All products have 1-2 years warranty, and we sure the products will be free from maintenance within warranty period;
6. Faster delivery: Sample order in stock, and 3-7days for bulk production.
7. Payment term: L/C, T/T, open account transaction, Weston union & Paypal.

## **FAQ:**

Q: Are our products durable?

- 1) We offer 2-year-warranty.
- 2) The tech support & parts replacement are offered for free.
- 3) Our products are also used in our own office and workshop.
- 4) The components used are of quality insurance.
- 5) All the products must be tested before being shipped.
- 6) We own CE CCC ROHS ISO9001 IP67certificates.
- 7) Our company has been engaged in designing and manufacturing power supply for more than 10 years.

Q: Whether offer free samples?

A: Yes, we offer free samples<5pcs, >5pcs need samples cost.

Q: How to order our product?

A:1) Please tell us the model and quantity and other request you need.

- 2) We make the PI for you.
- 3) After you confirm the PI, we arrange the order for you after receiving your payment.
- 4) After the goods finished, we send the goods out to you and tell you the tracking number.
- 5) We will track your goods until you receive the goods.

Q: What's your shipment method?

A: We ship by Express, by air, by sea, by train. Normally we checked and compare, then provide customer the most proper shipment method.

Q: What's about MOQ?

A: First order MOQ=1pcs.

Q: If I want to release order, what's the payment method you accept?

A: We accept T/T, Paypal, Western union, L/C.

Q: If I want to release order, what's the process?

A: Thanks. You can send inquiry to us by Alibaba, or send us by email, we will reply within 24hrs.

Q: In use process if have a few bad products needs to be repaired, how to do?

A: You can send back to us, we offer free repair, and will resend to you with the next order.

Q: Could we return goods if we couldn't sell it out in our market?

A: Yes, you can, as long as don't affect our secondary sales.

Q: How to contact us?

A: Send your Inquiry Details in the Below, Click "Send" Now!